



6 High Street

Statutory listing:

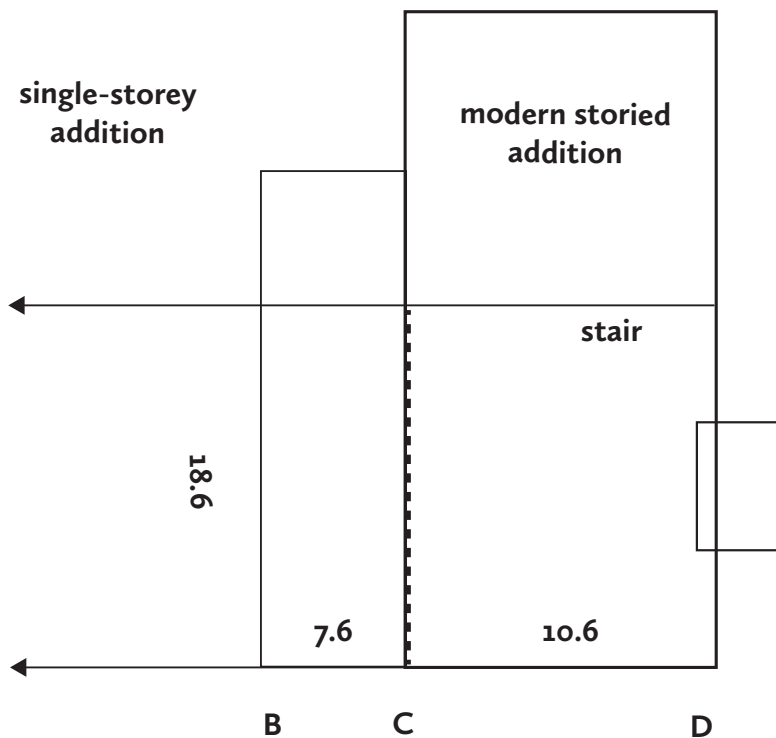
6,8, 10 High Street. Gil 1986:

Terrace of three cottages. C16 timber framed house, with C18 recladding and C19 extension (No 10) in conforming style, C20 rear additions. Rendered walls. Tile roof, with scalloped bands to 6 and 8; C18 stack attached to the east gable. South front of two storeys, 6 above 4 windows. Casements. Central gabled porch, No 6 with C20 canopy on posts and No 10 with gabled canopy on posts. The interior of No 8 shows a lobby-entrance plan, parts of the timber frame, and upstairs a malmstone Tudor fireplace, with moulded surround. No 10 included for group value.



Description

The listing description is relatively thorough as one would expect from 1986. The present no.6 has been heavily modified, incorporating timber elements (new to this build) and extended. The large external stack once served hearths at each level. At first floor an unexpected element remained, which made it possible to define one to two bays: B > C (part probably in adjacent property) and C > D of considerable width. The key element is a bay post with gun-stock-like jowl (C north) and most of the framing of a bay partition C, with fairly large square panels. The roof has been remodelled with a ridge board (some evidence for original pegged apex) side-purlins and tall raking struts to collars. Morticing on the underside of the tie at C indicated that the passage between the bays must have been to the south.



Conclusions

The jowl profile and pattern of framing suggested that this is part of a three/four bay house dating from the end of the 1500s/early 1600s. The external stack and re-roofing probably date from when the cottage was divided . . . mid-to late 1700s.