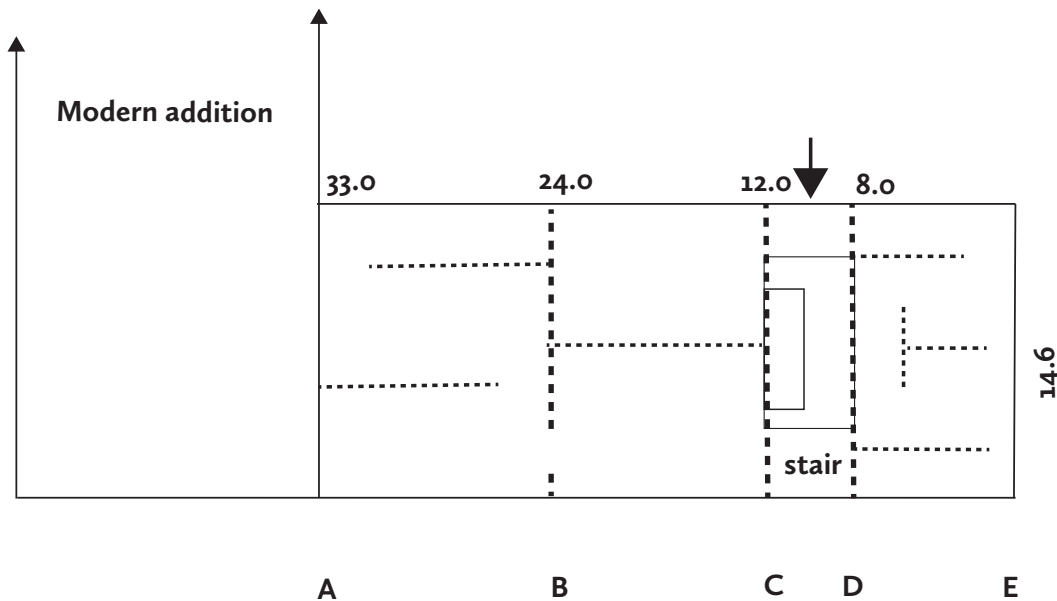


7 Wylds Lane, Weston

Description

House lies end-on to Wylds Lane, roughly east/west, in the hamlet of Weston. Comprised of two ranges at right angles, but western range (N/S) is a relatively modern addition. Conservatory added B > E (south). Original build of 4 bays (A > E), regular square framing with some half-height tension braces visible at corners and bay division. Tiled roof hipped at E, and at A before addition was made.



Chimney stack within narrowest bay CD (4.0) serving large ingle-nook onto BC, with high bressumer. Axial gird BC into tie above bressumer, stop-chamfered, the only finishing detail seen. Mortice evidence on underside of mid-tie at B for earlier partition with doorway to north. AB and DE both joisted with timbers aligned longitudinally. Stair trimmer remains in DE. Stair now rises against south side of stack, but mortice on post at C shows that tie C was cut back for this.

First floor rooms ceiled into roof space. Side-purlins with tall queen struts. Some window sites (owners' info). Timbers around CD were heavily sooted (owners' info.)

Comment

Combination of details associated with CD indicate that this was at first a smoke-bay house, with wattle-and-daub partitioning channelling the smoke rising from the stone-surrounded hearth out through the hip gablet. TY access to first floor was then from DE, with probable access around the smoke bay to the rest of the chambers. Later a solid stack was built in above the hearth. The plan, pattern of framing, roofing construction and sequence of development indicates a date of cl 550 + or - 10.