

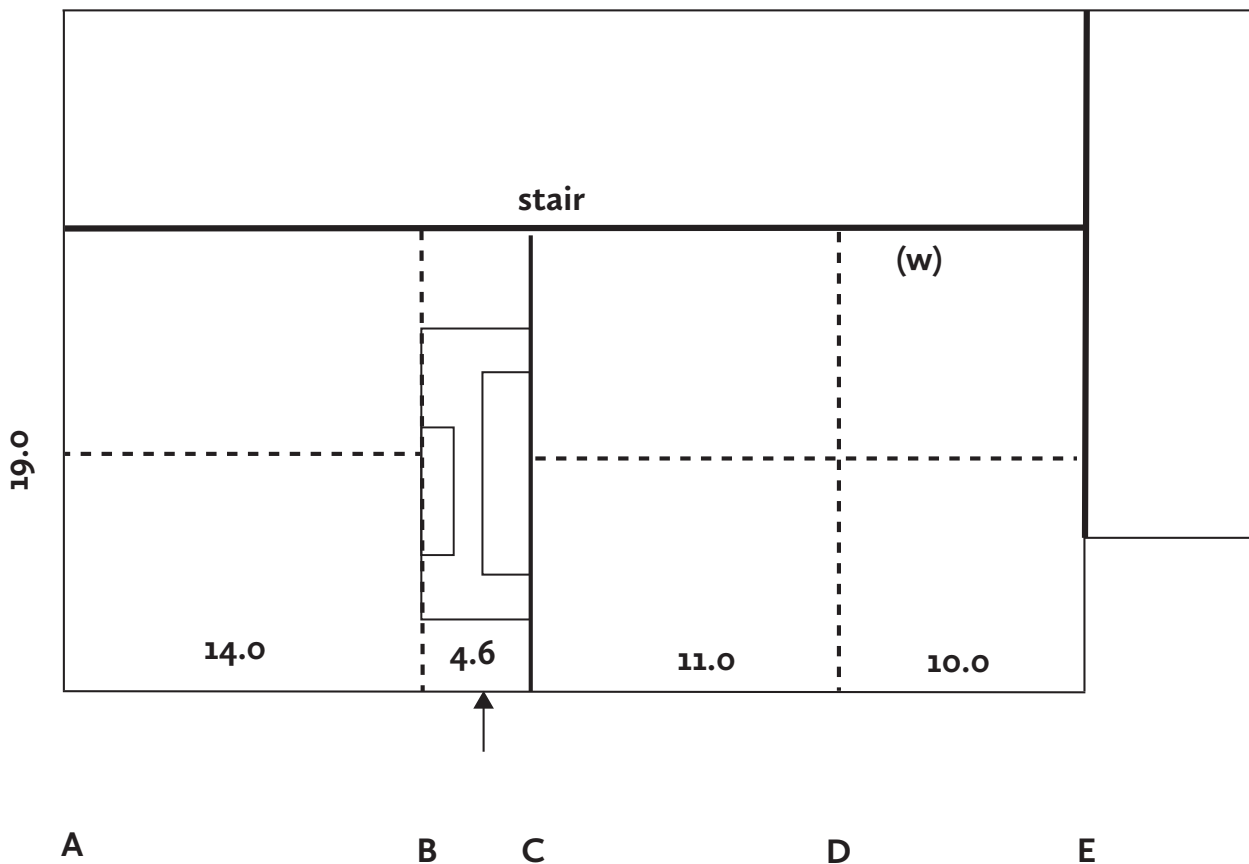
Rock Cottage

Statutory listing:

Rock Cottage 17, BONES LANE 1986 II
Cottage. C17 timber frame, with C18 cladding, C20 restoration and minor extensions at rear and end.
Malmstone walls with brick quoins and cambered arches. Tile roof, hipped at the north end, half-hipped at the south, the rear catslide being broken by a central C20 gable. East front elevation of two storeys, 3 above 4 windows. Early C19 casements.



Well



Rock Cottage *continued*

Plain doorway with gabled hood on brackets. The interior shows massive framing (in cross walls), and a small rear window with diagonal oak mullions (masked by the later catslide roof).

Description

Well covered by the listing description, this features the elevations of malmstone with brick trim characteristic in Buriton for cladding of older buildings. The rear outshot with catslide, central gable and flanking dormers is relatively modern (viz owner's photographs).

Baffle-entry into BC. Axial girders CD and DE are stop-chamfered (AB is boxed and ceiled) but joists are set high and without finish. Hearth with timber bressumer at C, but heavy stone jambs mark the width of the original bressumer. Stair now rises within outshot, turning into BC. First floor

Trusses C and D visible to collar height with tall queen posts. Heavy central post at D has taper burn marking; hearth at C now blocked. Small 3-light unglazed window with diamond set wooden mullions between DE now blocked by catslide. Ties at C and D cranked at the rear with identical elbow-like bend. Roof lined but heavy rafters partially visible, and probably pegged apex. Flying collar of rough timber over AB.

Consideration

Well-proportioned house with six living spaces, but no true attic space. Echoes medieval plan of solar (AB) 2bay hall (BD) and service (DE). Probably fully framed initially. Set of joists within CD, taken with nail holes and lack of finish suggest original ceilings probably plastered (socially significant). Timber of good scantling, but cranked feature to ties C & D unique; possibly reflection of difficulties obtaining good lengths of timber. A baffle-entry house; original stair probably a winder within BC (rear). Some features probably compromised during periods of multiple occupation.

Diagnostic features such as roof construction, mullioned window, plan-type, plastered ceilings, point to good quality build of mid 1600s. There would, almost certainly, have been a suite of outbuildings.